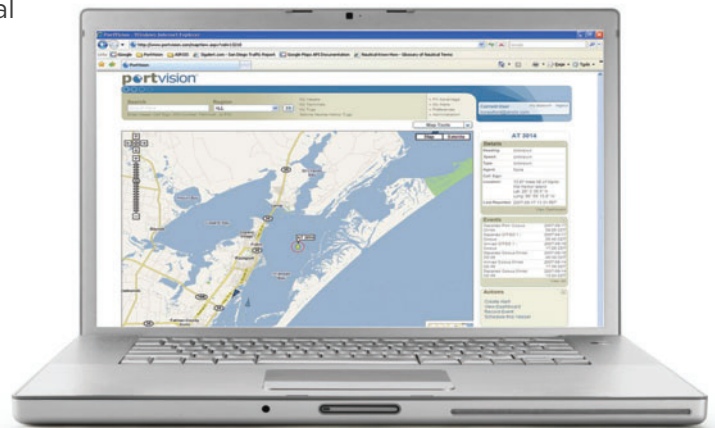




PortVision is a web-based service that empowers maritime users with new levels of information and knowledge about vessel and terminal activities. PortVision provides complete visibility to all commercial ship traffic, including real-time vessel locations as well as up to 5 years of historic data.¹

Need to know when a ship arrives or departs? Real-time information about every vessel arrival and departure is automatically recorded and available to authorized PortVision users. Simply select a vessel and view event history. Or set an e-mail or mobile text message alert and be notified of vessel events in real-time.

Configure PortVision to highlight only your specific vessels of interest, or view all AIS-enabled vessels on the waterway. Incorporate PortVision's optional satellite communicators to bring visibility to vessels at sea, unmanned barges, and incident response equipment – all within the integrated PortVision display. See the whole picture, any time, from anywhere.



Commercial

- Increase asset efficiency
- Reduce fuel costs
- Optimize labor and resources
- Enhance customer service
- Increase contract compliance

Government, Law Enforcement, and Incident Response

- Increase maritime domain awareness (MDA)
- Improve incident response
- Aid investigations
- Enhance briefings
- Identify sources of spills, dock, and ATON damage

Features

- Web-based access – no downloads or plug-ins required
- Flexible and easily integrated into existing systems and processes

¹Applies to AIS-equipped vessels in covered service areas

Search Bar

The power of PortVision search, easily available from within the map display. Simply enter what you are looking for and PortVision does the rest. Or if you prefer, navigate the map using convenient scroll, zoom, and pan features.

Real-time Map Display

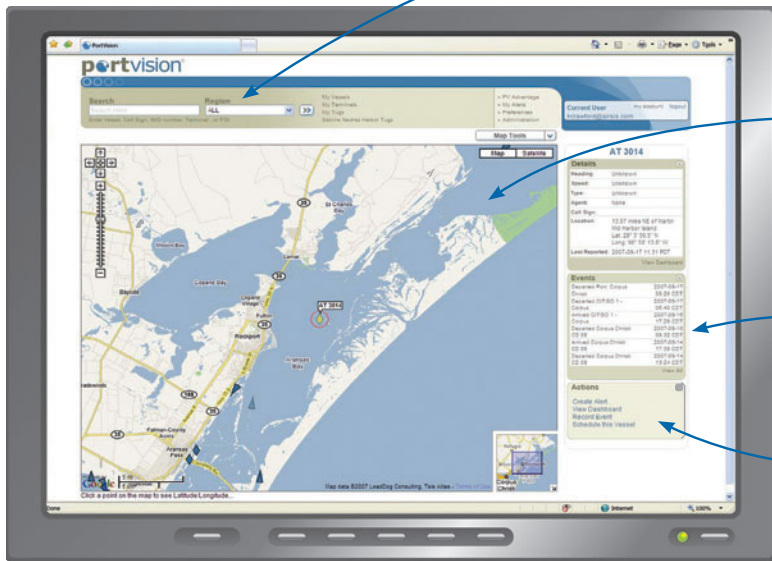
Interactive map with current vessel locations, terminals, and key waterway points-of-interest. Select from satellite or map view. Restrict display to your specific vessels of interest or all vessels, with color-coding by vessel.

Event History

View up to 5 years history of port/terminal arrivals, departures, and passings for any selected vessel, terminal, or point-of-interest.

Notifications and Alerts

Setup automated alerts so that you are notified by e-mail or mobile text message on any arrival, departure, or passing for a selected vessel.

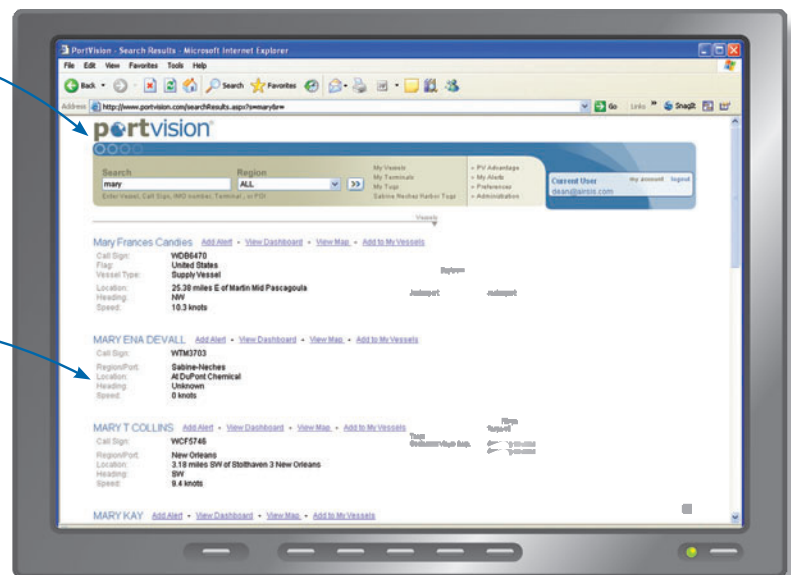


Vessel and Terminal Search

Google-like search allows you to find exactly what you are looking for. Simply type a vessel name, call sign, or IMO number and find a vessel. Or if you prefer, enter a terminal name, point-of-interest, city name, or lat/lon coordinate to view a specific area on the waterway. Your search results are immediately displayed.

Custom Vessel Lists

Create a custom view of only vessels that are of specific interest. Then easily access current vessel locations as needed. Filter results to view all vessels or just your selected vessels of interest.



Dashboards and Collaboration

Use PortVision to get a clear picture of all events associated with a selected vessel or terminal. Document management and dock scheduling are integrated directly into the PortVision display. Access port manuals, safety regulations, and other documents for any participating terminal. Easily collaborate between agents, vessels, and terminal personnel to increase efficiency, reduce costs, and enhance safety and security.